

**ErbB3 (HER3) Antibody**  
**Rabbit mAb**  
**Catalog # AP90313****Specification**

---

**ErbB3 (HER3) Antibody - Product Information**

Application	WB, IP
Primary Accession	<a href="#">P21860</a>
Reactivity	Rat
Clonality	Monoclonal
<b>Other Names</b>	
ERB3, ERBB3, HER3, c-erbB3, kinase ErbB3	
Isotype	Rabbit IgG
Host	Rabbit
Calculated MW	148098 Da

**ErbB3 (HER3) Antibody - Additional Information**

Dilution	WB~~1:1000 IP~~N/A
Purification	Affinity-chromatography
Immunogen	A synthesized peptide derived from human ErbB3 (HER3)
Description	This membrane-bound protein has a neuregulin binding domain but not an active kinase domain. It therefore can bind this ligand but not convey the signal into the cell through protein phosphorylation. However, it does form heterodimers with other EGF receptor family members which do have kinase activity. Heterodimerization leads to the activation of pathways which lead to cell proliferation or differentiation.
Storage Condition and Buffer	Rabbit IgG in phosphate buffered saline , pH 7.4, 150mM NaCl, 0.02% sodium azide and 50% glycerol. Store at +4°C short term. Store at -20°C long term. Avoid freeze / thaw cycle.

**ErbB3 (HER3) Antibody - Protein Information****Name** ERBB3**Synonyms** HER3**Function**

Tyrosine-protein kinase that plays an essential role as cell surface receptor for neuregulins. Binds

to neuregulin-1 (NRG1) and is activated by it; ligand-binding increases phosphorylation on tyrosine residues and promotes its association with the p85 subunit of phosphatidylinositol 3-kinase (PubMed:<a href="http://www.uniprot.org/citations/20682778" target="\_blank">20682778</a>). May also be activated by CSPG5 (PubMed:<a href="http://www.uniprot.org/citations/15358134" target="\_blank">15358134</a>). Involved in the regulation of myeloid cell differentiation (PubMed:<a href="http://www.uniprot.org/citations/27416908" target="\_blank">27416908</a>).

#### Cellular Location

[Isoform 1]: Cell membrane; Single-pass type I membrane protein

#### Tissue Location

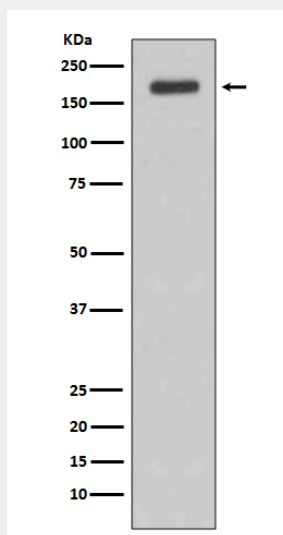
Epithelial tissues and brain.

### ErbB3 (HER3) Antibody - Protocols

Provided below are standard protocols that you may find useful for product applications.

- [Western Blot](#)
- [Blocking Peptides](#)
- [Dot Blot](#)
- [Immunohistochemistry](#)
- [Immunofluorescence](#)
- [Immunoprecipitation](#)
- [Flow Cytometry](#)
- [Cell Culture](#)

### ErbB3 (HER3) Antibody - Images



Western blot analysis of ErbB3 (HER3) expression in MCF-7 cell lysate.